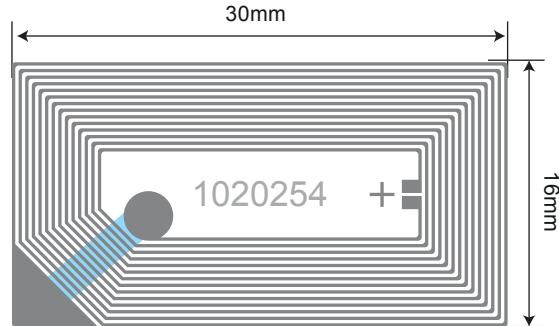


Antenna 1020254 30*16mm

Example of Dry Inlay/Product



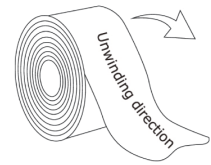
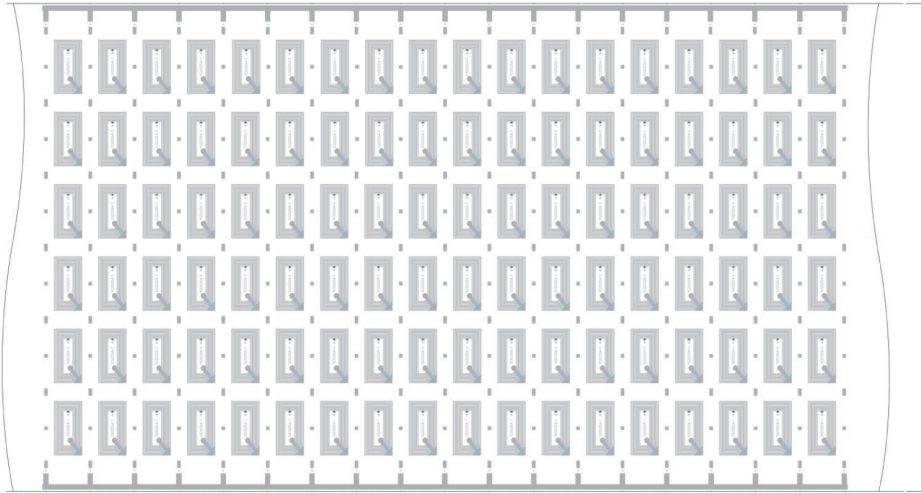
Antenna Design

Top: Aluminum 30 μ m
 Substrate: PET 38 μ m
 Bottom: Aluminum 10 μ m

Antenna No.	Pitch	Chip
1020254	CD40 / MD38 (6 rolls)	SLIL/SLIX
1020254A	CD40 / MD25.4 (6 rolls)	SLIL/SLIX
1020254B	CD120 / MD110 (2 rolls)	SLIL/SLIX
1020254C	CD40 / MD25.4 (6 rolls)	SLIL/SLIX
1020254D	CD40 / MD25.4 (6 rolls)	SLIL/SLIX
1020254E	CD40 / MD25.4 (6 rolls)	SLIL/SLIX
1020254F	CD40+20 / MD25.4 (5 rolls)	SLIL/SLIX

Unwinding Direction





We can do any web width according to customer's requirements.