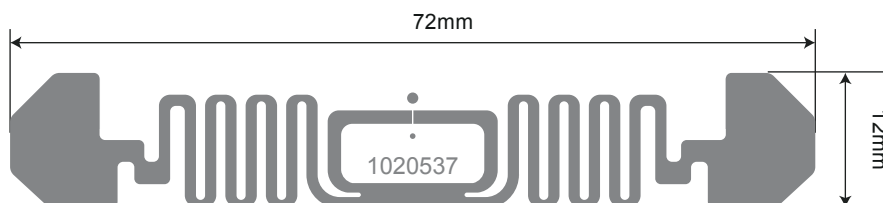


# Antenna 1020537 72x12mm

## Example of Dry Inlay/Product

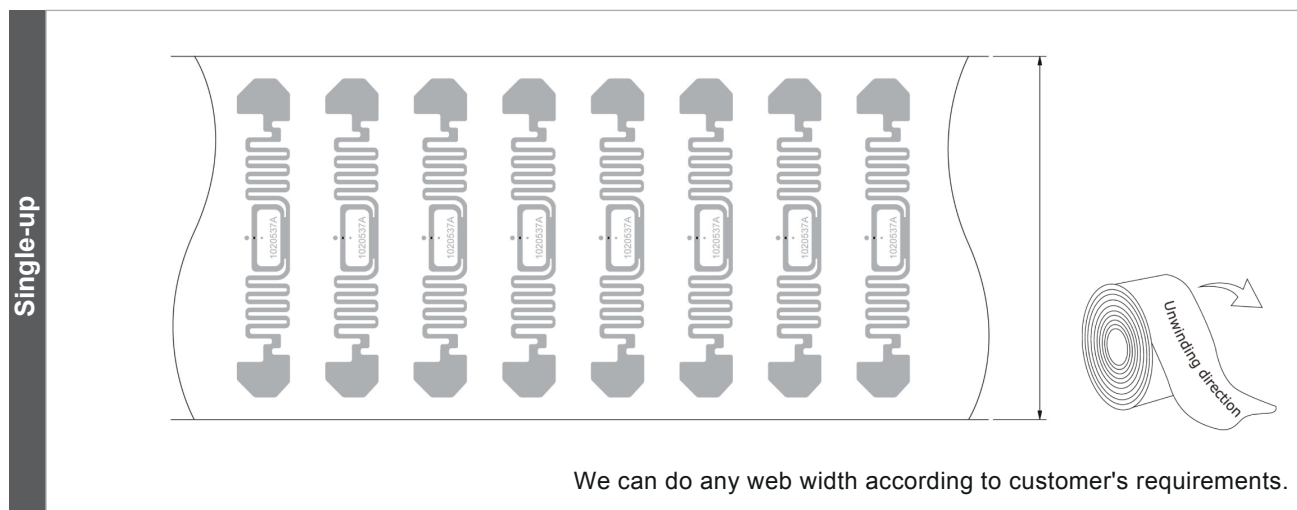


### Antenna Design

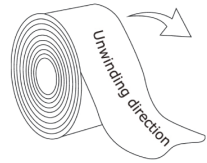
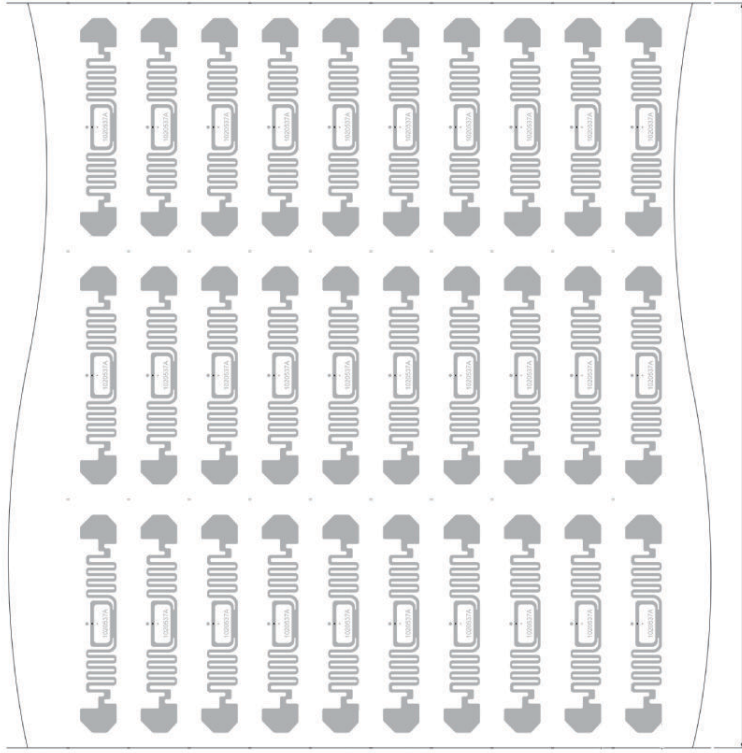
Top: Aluminum 10  $\mu$ m  
Substrate: PET 50  $\mu$ m/Paper 60  $\mu$ m

Antenna No.	Pitch	Chip
1020537	CD82 / MD30 (3 rolls)	MR6/MR6-P/MR6-A
1020537A	CD82 / MD20 (3 rolls)	MR6/MR6-P/MR6-A
1020537AA	CD79 / MD36.2 (4 rolls)	MR6/MR6-P/MR6-A
1020537AB	CD152.4 / MD114.3 (2 rolls)	MR6/MR6-P/MR6-A
1020537E	CD36 / MD80 (6 rolls)	MR6/MR6-P/MR6-A
1020537K	CD85 / MD26.99 (3 rolls)	MR6/MR6-P/MR6-A
1020537M	CD79 / MD36.2 (2 rolls)	MR6/MR6-P/MR6-A
1020537N	CD40 / MD79.375 (3 rolls)	MR6/MR6-P/MR6-A
1020537Y	CD79.375 / MD31.75 (4 rolls)	MR6/MR6-P/MR6-A

### Unwinding Direction



## Multiple-up



We can do any web width according to customer's requirements.